

vtech®

Parent's Guide

Go! Go!  
**CORY  
CARSON**®

**The Carson Playhouse™**

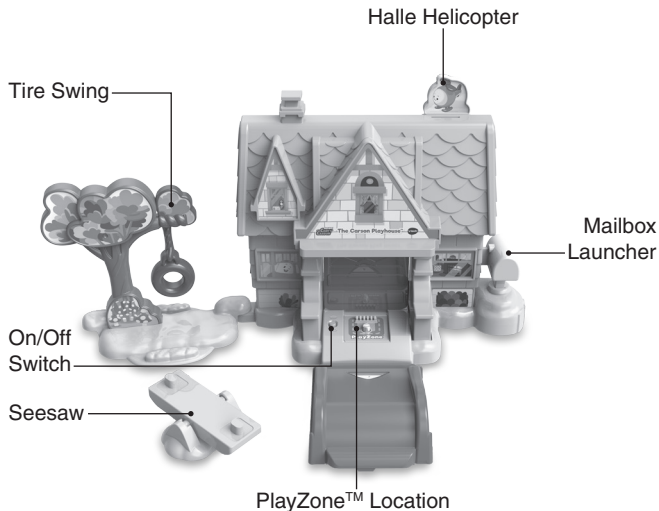


91-003946-000 (US) (CA)

# INTRODUCTION

Thank you for purchasing the **Go! Go! Cory Carson® The Carson Playhouse™!**

Get ready to play with Cory and Chrissy in their playhouse. Place the mini characters on the PlayZone™ location to hear fun phrases and sounds. Then, press the mailbox to launch the character.



Mini Cory



Mini Chrissy

# INCLUDED IN THIS PACKAGE



One mini Cory



One mini Chrissy



One Halle piece



One house



One base



One seesaw



One seesaw base



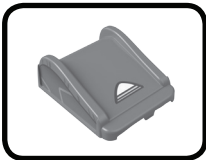
One tire swing



One tree



One tree base



One ramp track

- One label sheet
- One parent's guide

## WARNING

All packing materials such as tape, plastic sheets, packaging locks, removable tags, cable ties, cords and packaging screws are not part of this toy, and should be discarded for your child's safety.

## NOTE

Please keep this parent's guide as it contains important information.

## ATTENTION

Pour la sécurité de votre enfant, débarrassez-vous de tous les produits d'emballage tels que rubans adhésifs, feuilles de plastique, attaches, étiquettes, cordons et vis d'emballage. Ils ne font pas partie du jouet.

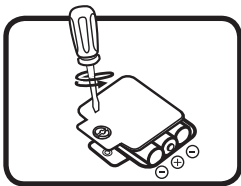
## NOTE

Il est conseillé de conserver ce guide des parents car il comporte des informations importantes.

# GETTING STARTED

## Battery Removal and Installation

1. Make sure the unit is turned **Off**.
2. Locate the battery cover on the bottom of the **playhouse**. Use a screwdriver to loosen the screw.
3. Remove old batteries by pulling up on one end of each battery.
4. Install 3 new AAA (AM-4/LR03) batteries following the diagram inside the battery box.
5. Replace the battery cover and tighten the screw to secure.



## BATTERY NOTICE

- Use new alkaline batteries for maximum performance.
- Use only batteries of the same or equivalent type as recommended.
- Do not mix different types of batteries: alkaline, standard (carbon-zinc), rechargeable, or new and used batteries.
- Do not use damaged batteries.
- Insert batteries with the correct polarity (+ and -).
- Do not short-circuit the battery terminals.
- Remove exhausted batteries from the toy.
- Remove batteries during long periods of non-use.
- Do not dispose of batteries in fire.
- Do not charge non-rechargeable batteries.
- Remove rechargeable batteries from the toy before charging (if removable).
- Rechargeable batteries are only to be charged under adult supervision.



### **WARNING / ATTENTION:**

Adult assembly required for battery installation.

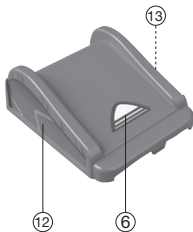
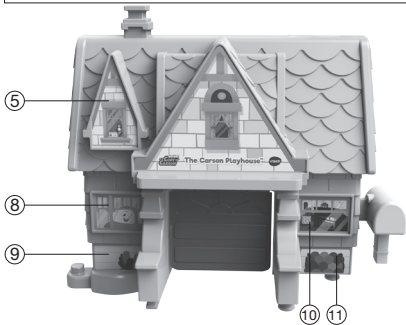
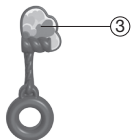
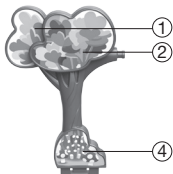
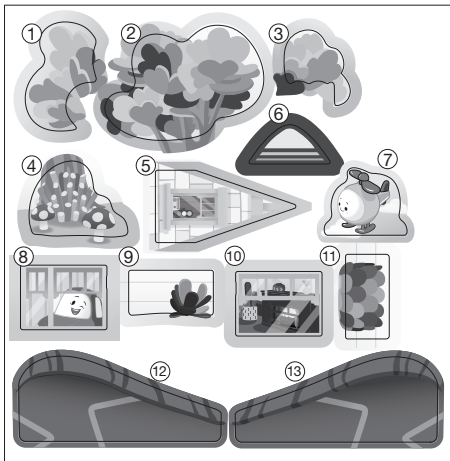
Keep batteries out of reach of children.

Les piles ou accumulateurs doivent être installés par un adulte.

Tenir les piles ou accumulateurs hors de portée des enfants.

# LABEL APPLICATION

Please securely stick the labels to the playset as indicated below:



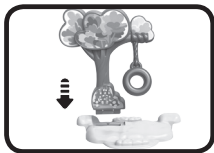
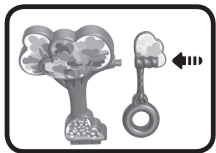
# ASSEMBLY INSTRUCTIONS

With the **The Carson Playhouse™**, safety comes first. Adult assembly is required. For your child's safety, do not let them play with this toy until it is fully assembled.

1. Place the **Base** on a flat surface and insert the **House** into the **Base**. Press down firmly, the house will click into place. Insert the **Halle Piece** into the **House**.



2. Connect the **Tire Swing** to the **Tree** and then insert the **Tree** into the **Tree Base**.

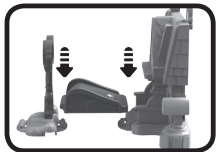


3. Connect the **Seesaw** to the **Seesaw Base**.



Playset may be configured in a variety of ways:

4. Connect the **Tree** and the **House** with the **Ramp tack** as shown on the left. Or connect the **Tree** to the **House** as shown on the right.





Once you've completed the above steps, you are ready to play! Mini characters from other sets (each sold separately) are also compatible.



## PRODUCT FEATURES

### 1. On/Off Switch

To turn the unit **On**, slide the **On/Off Switch** to the **On**  position. To turn the unit **Off**, slide the **On/Off Switch** to the **Off**  position.



### 2. Automatic Shut-Off

To preserve battery life, **The Carson Playhouse™** will automatically power down after approximately 45 seconds without input. The unit can be turned on again by pressing the **Mailbox Launcher** or triggering the **PlayZone™** with the mini characters.

### NOTE

If the unit powers down while playing, we suggest changing the batteries.



# ACTIVITIES

## 1. PlayZone™ Location

Place **Mini Cory**, **Mini Chrissy** or other Go! Go! Cory Carson® mini characters (sold separately) on the **PlayZone™ Location** to trigger fun phrases and sounds from the show. The characters will flash with the sounds.



## 2. Mailbox Launcher

When a mini character is on the **PlayZone™ Location**, press the **Mailbox Launcher** to flip open the garage door and launch the mini character over the **Ramp Track**.



# SONG LYRICS

1. Oh our house is a home,  
And we're never alone,  
Love and laughter will lead the way!
2. I like challenges,  
Yeah, woohoo! Let's play on the seesaw.

# MELODIES

1. Hickory Dickory Dock
2. I Want to Go Back to Michigan
3. Man on the Flying Trapeze
4. Listen to the Mockingbird
5. Here We Go Round the Mulberry Bush
6. Entertainer

## CARE & MAINTENANCE

1. Keep the unit clean by wiping it with a slightly damp cloth.
2. Keep the unit out of direct sunlight and away from any direct heat source.
3. Remove the batteries if the unit will not be in use for an extended period of time.
4. Do not drop the unit on hard surfaces and do not expose the unit to moisture or water.

## TROUBLESHOOTING

If for some reason the unit stops working or malfunctions, please follow these steps:

1. Please turn the unit **Off**.
2. Interrupt the power supply by removing the batteries.
3. Let the unit stand for a few minutes, then replace the batteries.
4. Turn the unit **On**. The unit should now be ready to use again.
5. If the unit still does not work, install a new set of batteries.

### **IMPORTANT NOTE:**

If the problem persists, please call our **Consumer Services Department** at **1-800-521-2010** in the U.S., **1-877-352-8697** in Canada, or by going to our website **vtechkids.com** and filling out our **Contact Us** form located under the **Customer Support** link. Creating and developing VTech products is accompanied by a responsibility that we take very seriously. We make every effort to ensure the accuracy of the information, which forms the value of our products. However, errors sometimes can occur. It is important for you to know that we stand behind our products and encourage you to contact us with any problems and/or suggestions you might have. A service representative will be happy to help you.

## NOTE :

This equipment has been tested and found to comply with the limits for a Class B digital device, pursuant to Part 15 of the FCC Rules. These limits are designed to provide reasonable protection against harmful interference in a residential installation. This equipment generates, uses and can radiate radio frequency energy and, if not installed and used in accordance with the instructions, may cause harmful interference to radio communications. However, there is no guarantee that interference will not occur in a particular installation. If this equipment does cause harmful interference to radio or television reception, which can be determined by turning the equipment off and on, the user is encouraged to try to correct the interference by one or more of the following measures:

- Reorient or relocate the receiving antenna.
- Increase the separation between the equipment and receiver.
- Connect the equipment into an outlet on a circuit different from that to which the receiver is connected.
- Consult the dealer or an experienced radio/TV technician for help.

**Caution:** Changes or modifications not expressly approved by the party responsible for compliance could void the user's authority to operate the equipment.

### **Supplier's Declaration of Conformity**

47 CFR § 2.1077 Compliance Information

Trade Name: VTech®  
Model: 5454  
Product Name: Go! Go! Cory Carson®  
The Carson Playhouse™  
Responsible Party: VTech Electronics North America, LLC  
Address: 1156 W. Shure Drive, Suite 200  
Arlington Heights, IL 60004  
Website: vtechkids.com

THIS DEVICE COMPLIES WITH PART 15 OF THE FCC RULES. OPERATION IS SUBJECT TO THE FOLLOWING TWO CONDITIONS: (1) THIS DEVICE MAY NOT CAUSE HARMFUL INTERFERENCE, AND (2) THIS DEVICE MUST ACCEPT ANY INTERFERENCE RECEIVED, INCLUDING INTERFERENCE THAT MAY CAUSE UNDESIRED OPERATION.

***CAN ICES-3 (B)/NMB-3(B)***

**Visit our website for more  
information about our products,  
downloads, resources and more.**

***www.vtechkids.com***  
***www.vtechkids.ca***

Read our complete warranty policy online at  
***www.vtechkids.com/warranty***  
***www.vtechkids.ca/warranty***



TM & © 2020 VTech Holdings Limited.  
All rights reserved.

**Printed in China.**

91-003946-000 (US) (CA)